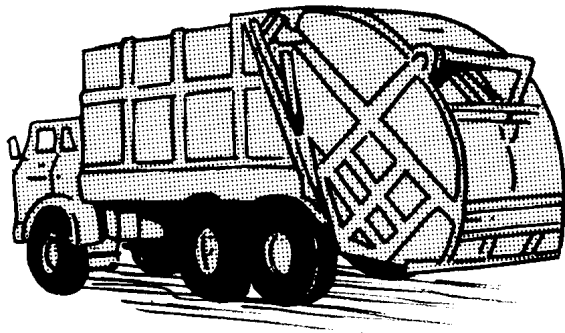
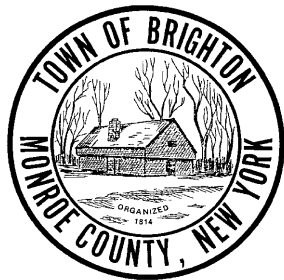


TOWN OF BRIGHTON INFORMATION ON REFUSE DISTRICTS



Prepared by:

Town of Brighton
Department of Public Works
2300 Elmwood Avenue
Rochester, NY 14618



Printed February 20, 2009

- What is a Refuse District?
 - A refuse district is a designated area in which the Town is responsible for providing refuse collection services to the residents. The cost for the service is added to the property tax bill as a special district charge.
- What does it cost to be in a refuse district?
 - The charge paid for refuse collection can vary from year to year. The refuse collection service is competitively bid and awarded to the lowest responsible bidder meeting the contract specifications. Historically, the cost of refuse collection within the district areas has been much less than collection rates outside of the district areas. This is the main reason why residential areas form refuse districts. For example, the cost within district areas for 2009 will average around \$240 per residence per year.
- What are the advantages of being in a district?
 - Historically, rates have been much lower than those offered to residents outside of a district. This is due to several factors:
 - Increased competition via bidding process.
 - Lower overhead for the refuse collector, because billing is sent directly to the Town, eliminating mailings to hundreds of homes and late payments by homeowners.
 - No sales tax is required.
 - Rates are stabilized for the year and can be controlled year to year by some degree through contract renewal options.
 - Refuse collection takes place one day of the week for the neighborhood, instead of various collection days by different collectors.
 - Refuse would be collected at the house in the homeowner's standard trash containers and bags. At the homeowner's discretion, a toter (large trash container on wheels) would be provided by the collector which the homeowner would wheel to the curb, in lieu of collection at the house.
 - Extra services are included, such as

bulky refuse pickup and pickup of appliances, including refrigerators, at no extra charge.

- Town will intervene, if necessary, to resolve problems.
- What are the disadvantages of being in a district?
 - Although historically prices have been lower, there is no guarantee of this for future years.
 - The Town must cover costs of administering the district.
 - There is no flexibility in the homeowner choosing a collector - the Town must award the contract to the lowest responsible bidder.
 - There is less flexibility for homeowners to make special arrangements with the collector. The Town cannot make the collector do things that are not covered in the contract.
 - All homeowners pay for collection for the entire year, even if they are away from their home for several months of the year.
- How does a refuse district work?
 - The Town will:

- Competitively bid for the service.
- Administer the Contract.
- Handle complaints that the Collector doesn't solve.
- Bill residents for services as part of the annual tax bill.

- The Collector will:
 - Pick up refuse at the house on a weekly basis.
 - Pick up recyclables at curbside the same day as refuse pickup.
 - If notified ahead of time, pick up reasonable amounts of bulky refuse at the curbside.
 - Bill the Town for services.
 - Notify homeowners of important information, such as telephone number, collection day, etc.
- The Homeowner should:
 - Separate recyclables from trash.
 - Use cans with secure lids.
 - Limit weight of cans to 60 pounds or less.
 - Wheel toter to the curb (if this option is used).
 - Call ahead for bulky pickups.
 - Call the collector first with any problems.
 - Call the Town if problems are not properly resolved through the collector.

- How do I set up a district?
 - Talk to your neighbors.
 - Call Tom Low, Commissioner of Public Works at 784-5225 to let him know your intentions of forming a district and, if needed, set up an informational meeting for your neighborhood.
 - Obtain notarized signatures on a map and petition form (Town will provide) from a majority of the property owners within the proposed district, comparing the assessed value of the signed parcels to total assessed value of parcels within the proposed district. **Petitions must be received by June 1st.**
 - The Town will then hold a public hearing to act upon the petitions.
 - Services would begin January 1st following the adoption of the district.